

3rd Armored Division Campaigns during World War II

 Captured Marburg, March 28, 1945

Created in 1941, the 3rd Armored Division landed on the Normandy beaches of France in late June 1944, just weeks after [D-Day](#) (June 6), the massive Allied invasion of western Europe. The "Spearhead" division advanced rapidly eastward, reaching the German border by mid-September. During the German winter offensive into the Ardennes, the [Battle of the Bulge](#), the division was redeployed to Belgium. In March 1945, the 3rd Armored Division advanced into Germany, capturing the city of Cologne and crossing the [Rhine](#) River. In April, it advanced eastward into Thuringia and continued the push east until war's end.



U.S. Army Center of Military History



[About CMH](#) ▾ [Museums](#) ▾ [Unit History](#) ▾ [Research](#) ▾ [Publications](#) ▾

[Home](#) > [Force Structure and Unit History Branch](#) > [Organizational History Program](#)

[Return to Table of Contents](#)

3d ARMORED DIVISION

"Spearhead"

The mixture of insignia and distinctive colors of several arms incorporated in the Armored Force symbolize integrity and esprit. It is an interlocked ornament, found in Nordic monuments, composed of three torques: red for Artillery; blue for Infantry; and yellow for Cavalry. The symbols represent the characteristics of Armored Divisions: the tank track, mobility and armor protection; the cannon, fire power; and the red bolt of lightning, shock action.

ORGANIC UNITS

- Headquarters Company
- Service Company
- Combat Command A
- Combat Command B
- 36th Armored Inf Regiment
- 32d Armored Regiment
- 33d Armored Regiment
- 23d Armored Eng Bn
- 83d Armored Rcn Bn
- 143d Armored Sig Co
- 3d Armored Division Artillery
- 391st Armored Field Artillery Battalion
- 67th Armored Field Artillery Battalion
- 54th Armored Field Artillery Battalion
- 3d Armored Division Trains
- 3d Ordnance Maintenance Battalion
- Supply Battalion
- **45th Armored Medical Battalion**
- Military Police Platoon

111.ADC.3871

Source:

Digital Betacam (I Copy)

Video Time: 6 mins, 11 secs (YouTube)

547 views Feb 16, 2022

3rd Armored Division and 104th Division elements roll through Marburg, possibly on Elisabethstraße, March 28, 1945. Elisabethkirche (St. Elisabeth Church) can be seen in the background. Task Force Lovelady and Task Force Welborn of the 3rd AD capture Marburg. The 3rd Armored Division swings north from Marburg to Paderborn, reaching the Paderborn on March 31. The majority of this footage likely covers the drive from Marburg over Niedermarsberg to Paderborn. Source: NARA, ADC-111-3871

Check out GI Stories on Instagram: <https://www.instagram.com/g.i.stories...>

5. K.H. FIFIELD

15 Signal Photo
Company

F U S A

Please Identify Medic's and Wounded Soldier Units. Please Identify the Hospital Helping Wounded Soldier. Medic From 45th Armored Medical Battalion; is This an Evacuation Medical Battalion? Are Wounded Soldiers Evacuated to Station Hospital?

Please Identify Unit Medical Reports



Signal Corps

111

ADC

3871

ADC 3871

Card 1 of 2

SOURCE: AFCEP (M-1526)

FILM: ARCH & APC MP 771' ea Silent

LIB 4945

LIGHTNING DRIVE ON 3RD ARMORED SPEARHEAD

Nearing Central Germany

29 Mar 45

VS, US tanks with soldiers riding atop them drive thru towns of southern Germany.

Civilians smile and greet the US forces. A house flies white flag.

Short scene, German officer hobbles along road.

MLS, large group of German prisoners is rounded up in field. US tanks in fg guards over prisoners.

Column of US armored vehicles passes along country road; herd of sheep in fg.

LS, Pan, group of armored vehicles bivouaced in open field.

MS, German vehicles burn near edge of forest.

Several German prisoners with raised hands walk from forest area toward camera.

Additional scenes, German prisoners surrender to US forces. Some wounded are helped toward surrender line.

VS, infantrymen in open field. US medics help wounded German soldier. (German soldier appears to be extremely young. His face is bloodied from wounds.)

LS, armored vehicles pull off road into open field.

Record Group 111

Accession Number III-NAV-210

ARMY PICTORIAL CENTER, 35-11 35TH AVE., LIC 1, NY

EBS/sj

Signal Corps

.11

ADC 3871

ADC SOURCE: AFCE (M-1526)

Card 2 of 2

871-2 FILM: ARCH & APC MP 771' ea Silent

LIB 4945 (Cont'd)

LIGHTNING DRIVE ON 3RD ARMORED SPEARHEAD (Cont'd)

Nearing Central Germany (Cont'd)

29 Mar 45 (Cont'd)

MLS, infantrymen advancing across open field, firing into hedges.

Short scene, tank retriever tows damaged half-track.

MS, MLS, US infantrymen fire from hip position as they advance.

MCU, M-8 light armored car with mounted 37mm cannon.

LS from hill as smoke rises from fires in village.

LIB 4946

7TH ARMORED DIV C C D

Germany

30 Mar 45

Excellent scenes, US armored vehicles pass burning buildings and occasionally stop to fire at German snipers.

US half-track and other vehicles pass lumber yard area which is afire.

VS, tanks and armored vehicles move thru wooded area. Soldiers atop vehicles fire rifles and weapons of vehicles as they advance.

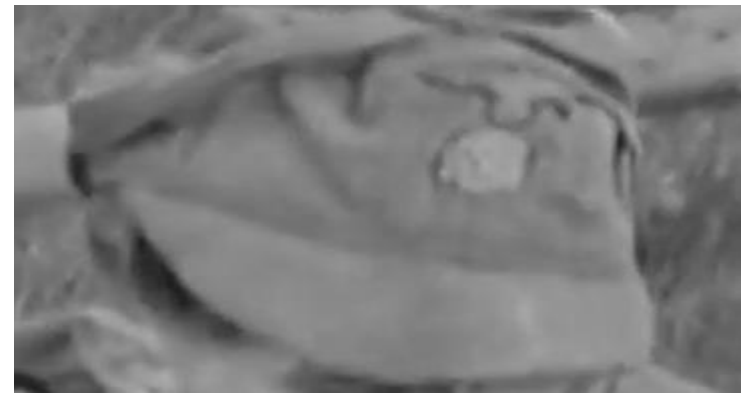
ARMY PICTORIAL CENTER, 35-11 35TH AVE., LIC 1, NY

Record Group 111
Accession Number 111 NAV-21(2)
EBS/sj









SS Wallen Sturmmann: Patches and Insignia; Probably Corporal

Waffen-SS (Schutzstaffel) consisted of the combat units; with a sworn allegiance to Hitler.



Sturmmann
Type 3 - 1940-45

Left and Right Collar Insignia



Left Sleeve Insignia

Above Left Shirt Pocket Flap



Army/Waffen-SS Close
Combat Clasp, Bronze...



On Left Shirt Pocket Flap

These insignias were meant to strike fear into their opponents, by demonstrating that the wearer's duty outweighed his regard for personal safety (an affront to death), while at the same time signifying his loyalty to the monarchy at all costs "unto death."